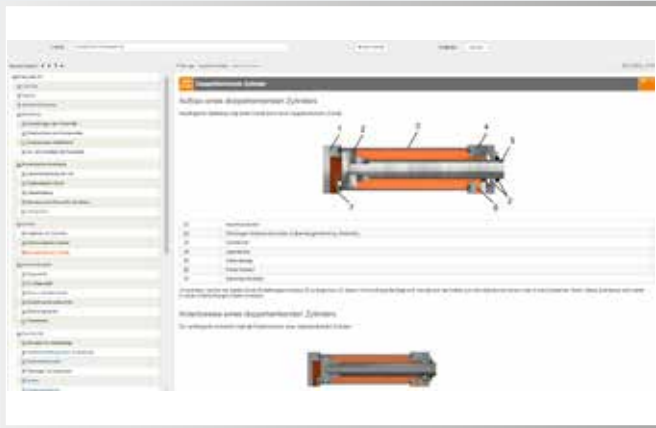


PNEUMATICS TRAINING SYSTEM



UNITRAIN
SYSTEM

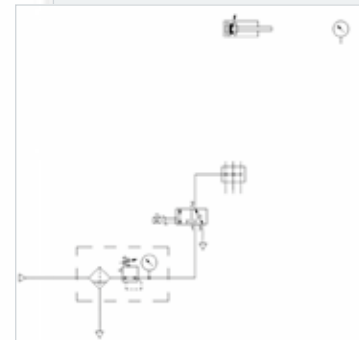
Pneumatics compact trainer

The UniTrain course on pneumatics teaches the necessary know-how needed for the control and maintenance of modern process automation. The fundamental features of industrial components are explored using animations and experiments on real systems.

Training content

- Fundamentals of pneumatics
- How single- and double-acting cylinders work
- Getting to know various directional valves
- How pneumatic controls are designed and function
- Hard-wired controls
- Programmable controls
- Recording of distance-time diagrams
- Time-dependent control

The screenshot shows the UniTrain software interface. On the left is a navigation tree with categories like 'Fundamentals of Pneumatics', 'Pneumatics', 'Electrical', and 'Pneumatics'. The main window displays a pneumatic circuit diagram of a double-acting cylinder controlled by two 3/2-way valves. Below the diagram is a detailed electrical control circuit with relays and a power source. A 'Description' section contains text explaining the cylinder's operation and the control logic. A 'Circuit diagram' section shows the electrical wiring.



This screenshot shows a more complex pneumatic circuit diagram within the UniTrain software. The circuit includes multiple cylinders, valves, and a pressure gauge. The pressure gauge is a circular instrument with a needle and a scale, labeled 'PESSEL'. To the right of the main diagram is a 'Symbol Library' panel with various pneumatic symbols and their electrical equivalents.

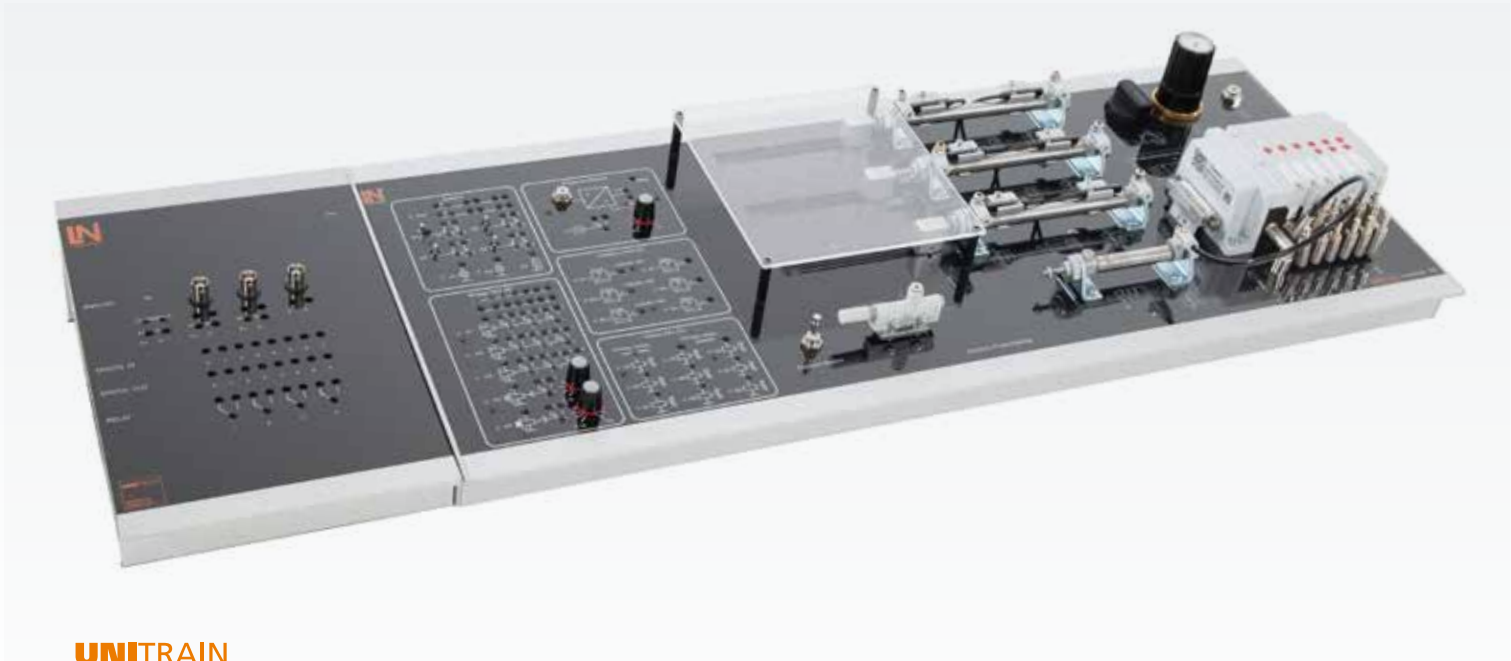
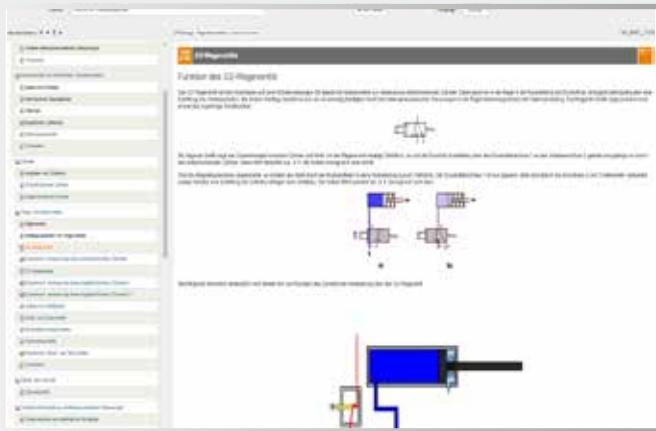
Experimenting the safe way with the UniTrain multimedia course

In addition to the pneumatics training system, the UniTrain multimedia course offers a PC-based evaluation of measurement data and fault simulation

Benefits

- Interactive multimedia course
- Set-up animations
- Deployable in every classroom
- Interactively create distance-time diagrams

ELECTROPNEUMATICS TRAINING SYSTEM



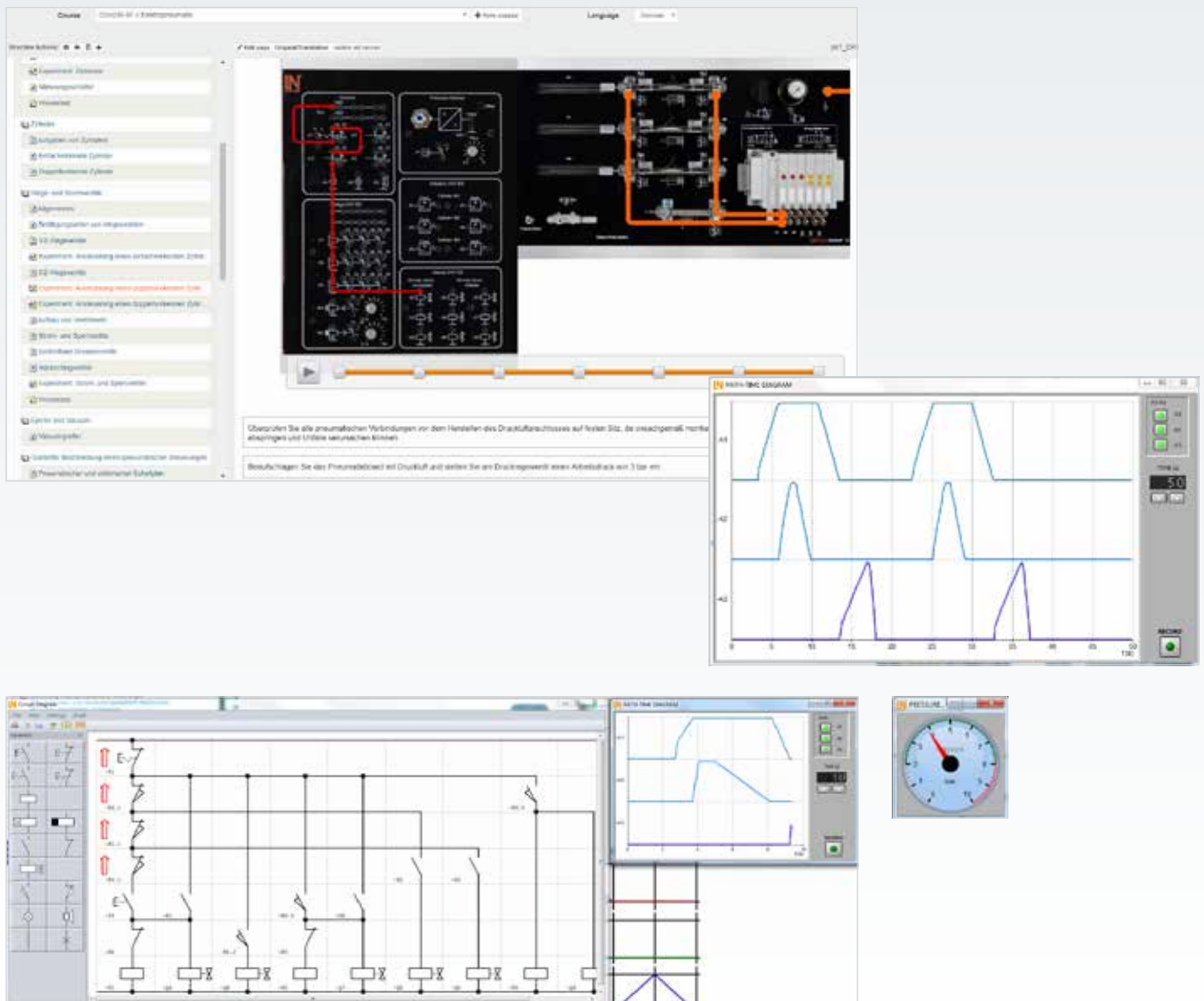
UNITRAIN
SYSTEM

Electropneumatics compact trainer

For the control and maintenance of modern process automation, our electropneumatics UniTrain course imparts all the necessary know-how. The basic features of industrial components are explored using animations and experiments on real systems.

Training content

- Fundamentals of electropneumatics
- How single- and double-acting cylinders work
- Becoming familiar with various directional valves
- How electropneumatic controls are designed and function
- Hard-wired controls
- Programmable controls
- Recording of distance-time diagrams
- Time-dependent control



Experimenting the safe way with the UniTrain multimedia course

In addition to the electropneumatics training system, the UniTrain multimedia course offers PC-based evaluation of measurement data and fault simulation

Benefits

- Interactive multimedia course
- Set-up animations
- Deployable in every classroom
- Interactively create distance-time diagrams
- Direct control of the hardware with interactive circuit diagram editor

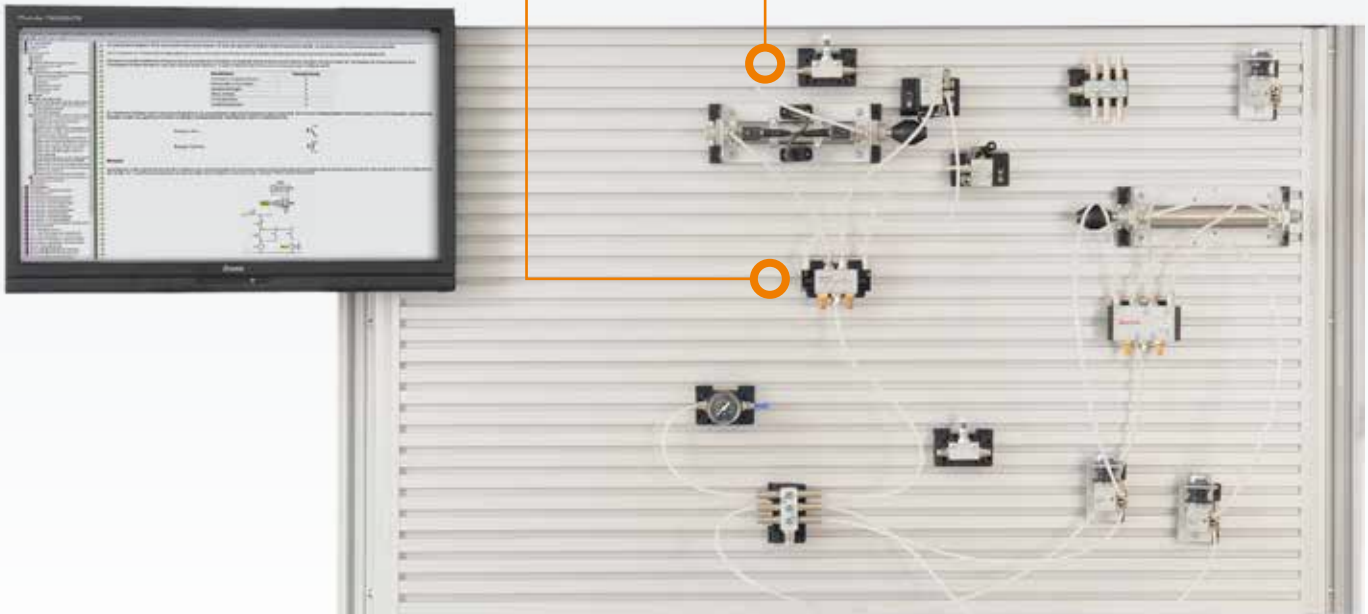
PNEUMATICS TRAINING SYSTEM



Patented "snap-in" mounting mechanism



Standard industrial components

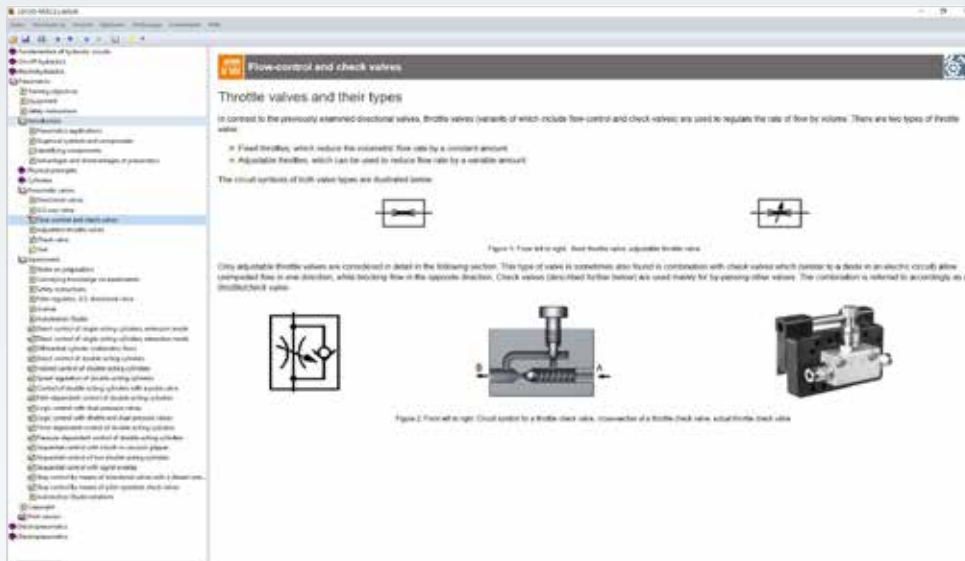


Manually operated pneumatics

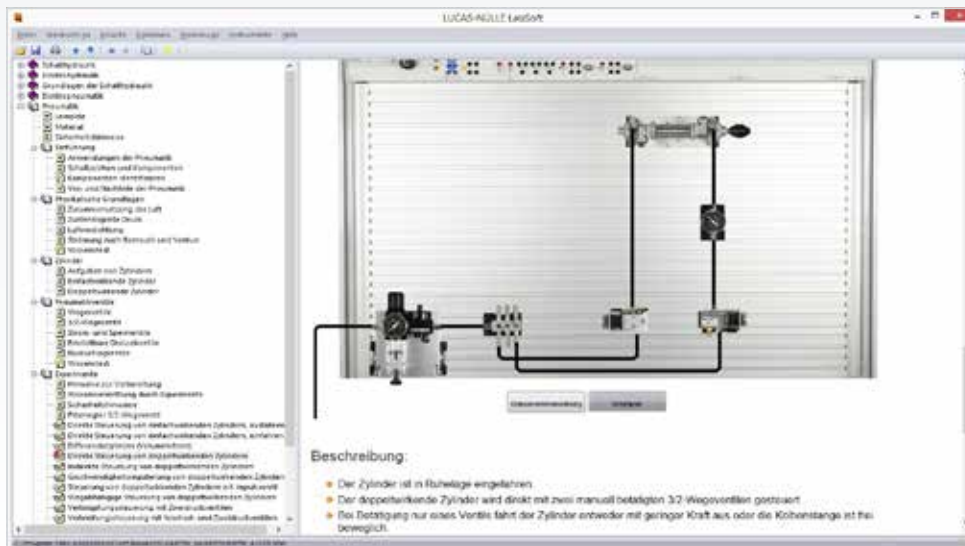
Equipped with authentic industrial components and the patented "snap-in" mounting mechanism the pneumatics training system is a cutting edge system for vocational and advanced training.

Training content

- Direct/indirect control of single- and double-action cylinders
- Path-dependent process controls
- Control of double-action cylinders using pulse valves
- Logic controls with exchange and two-pressure valves
- Pressure- and time-dependent controls
- Sequential control with pneumatic proximity switch



Teaching the fundamentals in the pneumatics course



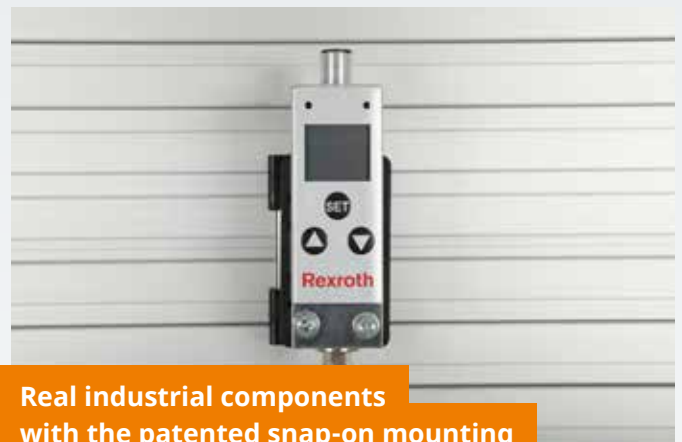
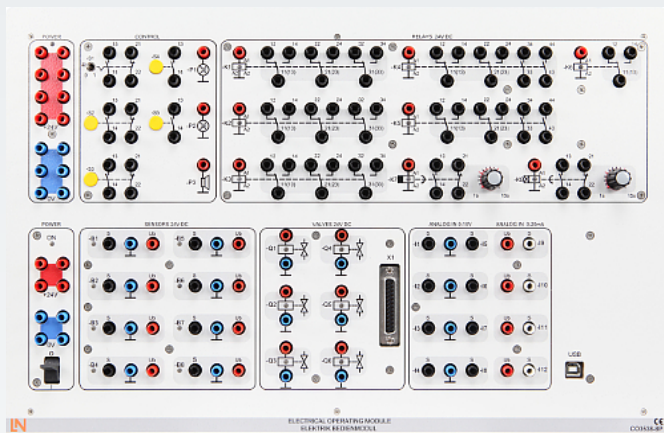
Step-by-step set-up animation in all courses

Testing learning progress with the ILA course

Benefits

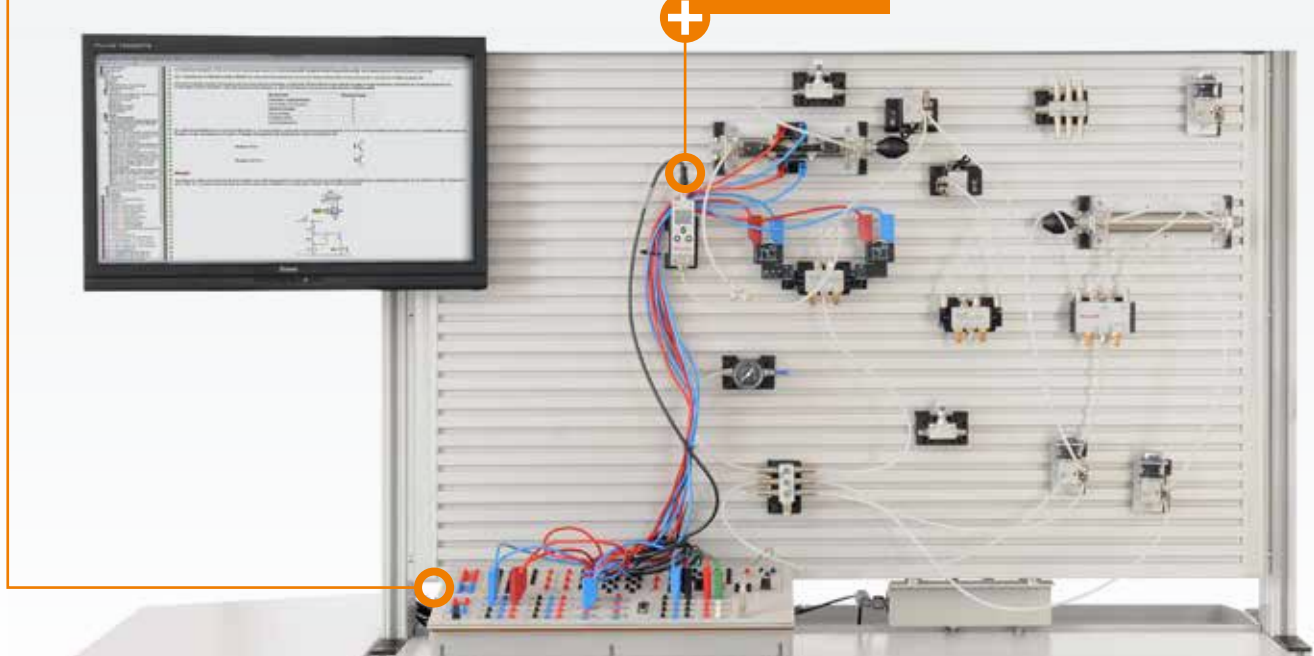
- Step-by-step instructions using multimedia
- The physical principles are explained using easy to understand animations
- PC-based evaluation of measurement data
- Virtual measuring instruments are started directly from within the experiment instructions

ELECTROPNEUMATICS TRAINING SYSTEM



Real industrial components with the patented snap-on mounting mechanism

Interactive interface for the circuit diagram editor

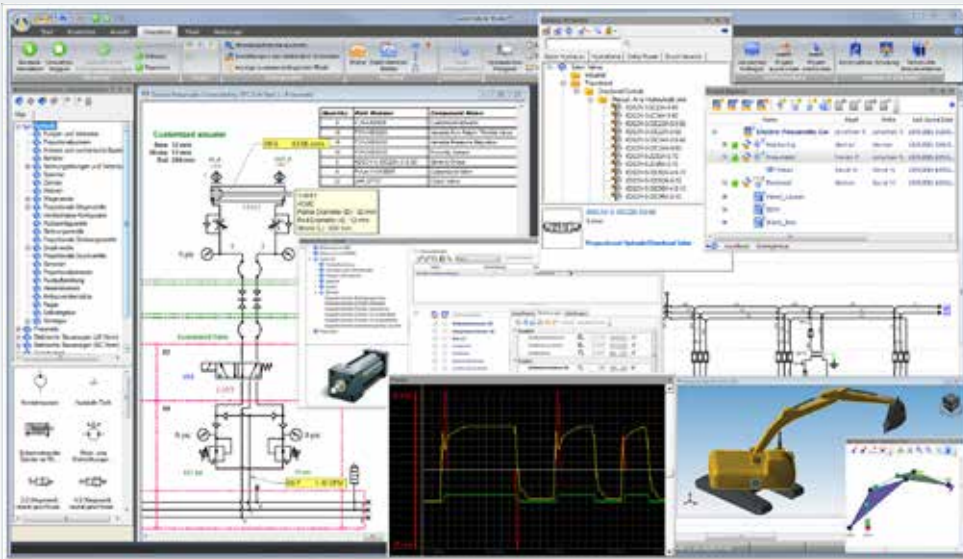


Electrical supplement to industrial pneumatics

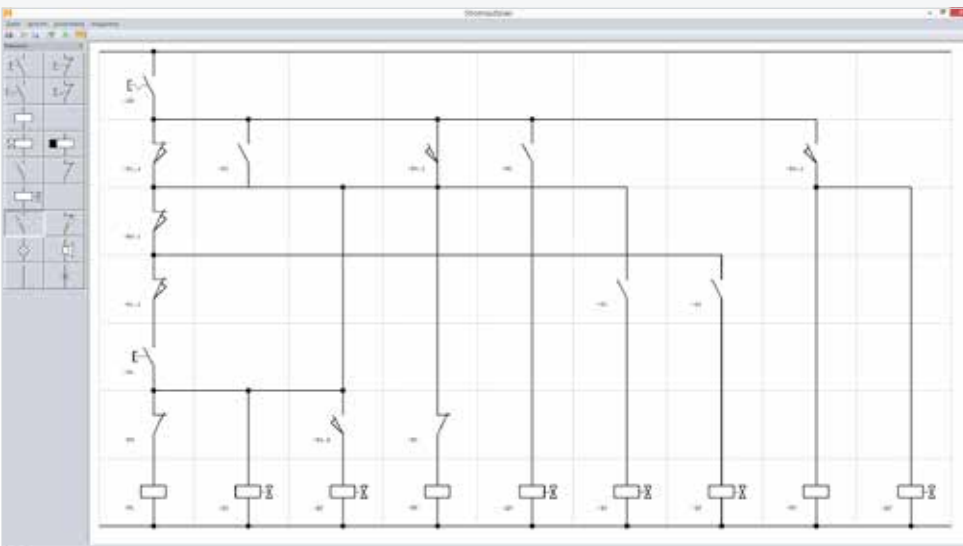
With the electro-pneumatic component supplement, it is possible to carry out project-related exercises in electropneumatics. The electro-pneumatic components are functionally connected via an electric control console. Alternatively, this can also be carried out using the service module located in the power duct.

Training content

- Function and use of electro-pneumatic components
- Setting up relay and self-holding controls
- Time- and process-based sequence control system
- Path-dependent process controls with sensors and presetting counters
- Program control with clock cycle



Automation Studio™, control of pneumatic components using the OPC interface



Interactive circuit diagram

Direct control of hardware from the ILA course

Benefits

- Interactive control of hardware from the ILA course
- Use Automation Studio™ to create circuit diagrams
- Open the interactive circuit diagram editor from the ILA course
- Open the measuring instruments from the ILA course
- Control and measurement data acquisition via USB